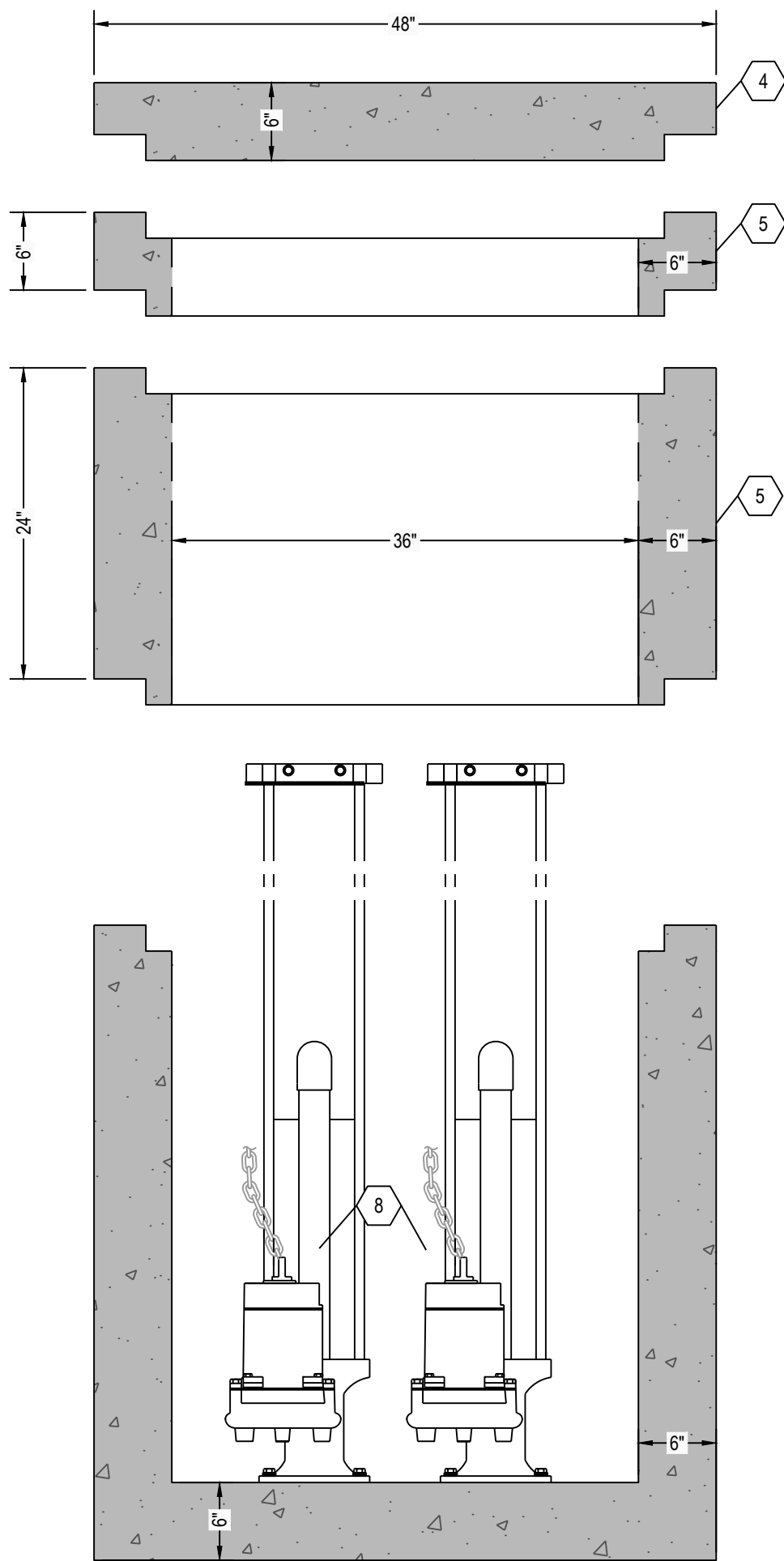
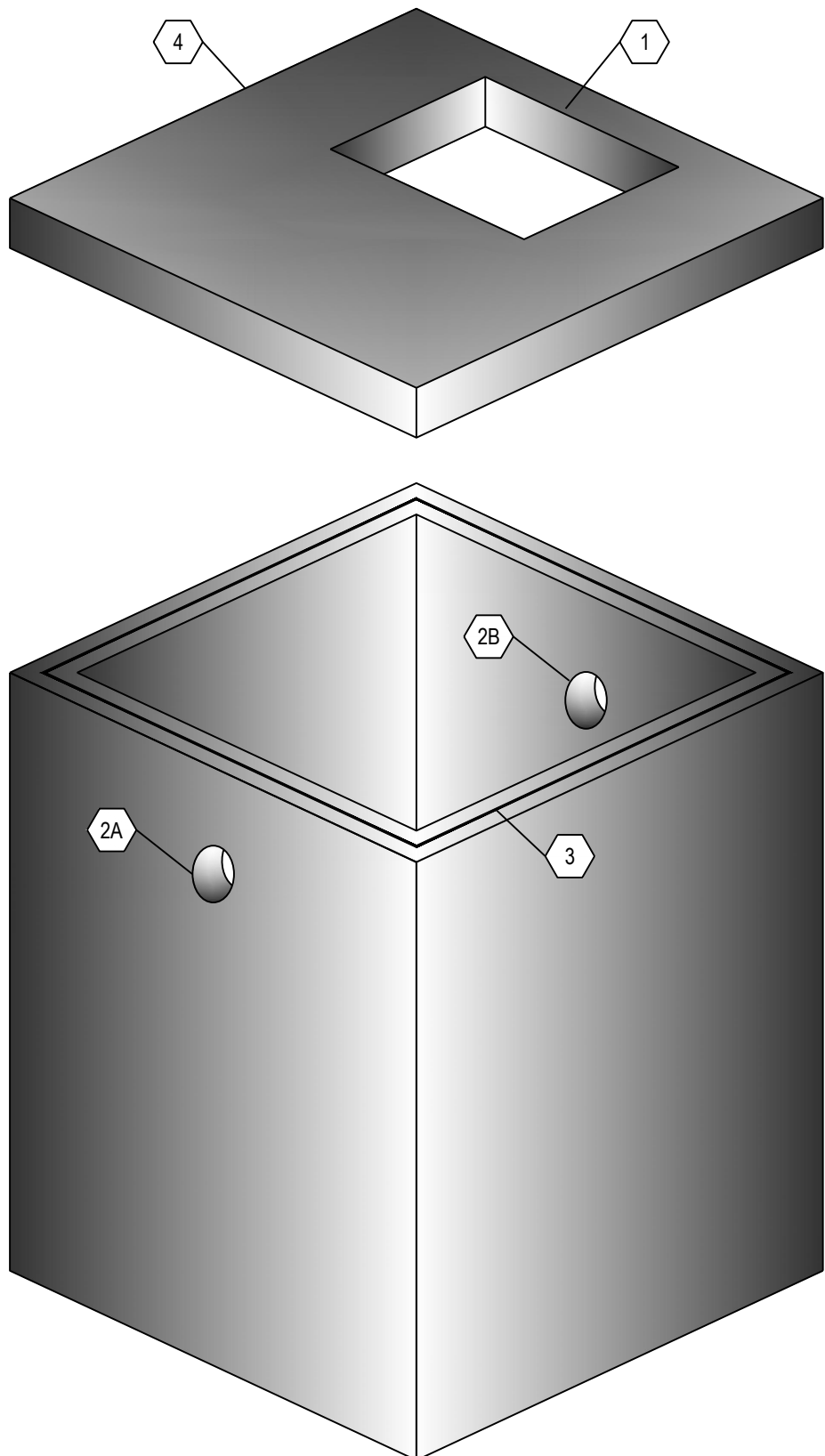


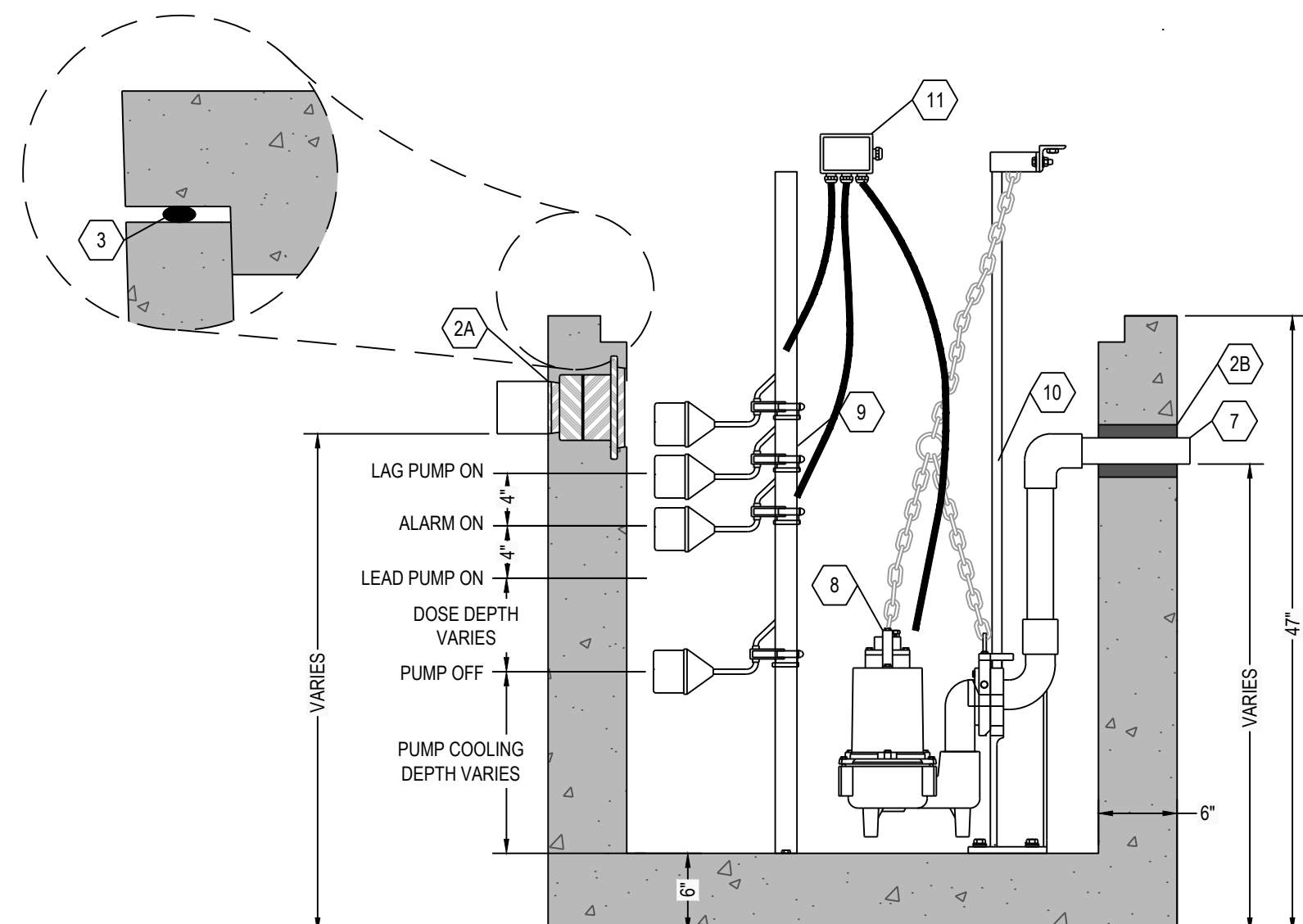
C6 LIFT STATION SECTION VIEW
1" = 1'



C4 LIFT STATION SECTION VIEW
1" = 1'



A6 THREE DIMENSIONAL ISOMETRIC VIEW
NTS



A4 LIFT STATION SECTION VIEW
1" = 1'

DOSING CHAMBER ELEVATIONS	
DESCRIPTION	ELEVATION (FEET)
BOTTOM OF CHAMBER	0.00
PUMP OFF	1.08
PUMP ON	2.83
ALARM	3.17
LAG PUMP	3.50

KEYNOTE INDEX	
1	24" X 36" ALUMINUM HATCH. SEE NOTES
2A	HIGH PRESSURE CLOSED END BOOT SEAL
2B	TS-4PRO RUBBER GASKET SEAL BY TUF-TITE
3	MASTIC ROPE
4	CONCRETE LID
5	CONCRETE RISER (AS NECESSARY)
6	6" DIAMETER INLET
7	7" X" DIAMETER OUTLET
8	DOSING PUMP
9	FLOAT POLE ASSEMBLY WITH STAINLESS STEEL HARDWARE. VARIABLE LENGTH
10	RAIL SYSTEM WITH STAINLESS STEEL RAILS & HARDWARE. VARIABLE LENGTH
11	WATERTIGHT ELECTRICAL JUNCTION BOX

NOTES	
HATCH TO BE 24" X 36" ALUMINUM HATCH, 300 PSF, SINGLE DOOR, INCLUDING ANGLE FRAME, STAINLESS STEEL NUTS & BOLTS, STAINLESS STEEL HINGES, STAINLESS STEEL AUTOMATIC HOLD-OPEN ARM WITH RED VINYL GRIP, FLUSH LIFT HANDLE, TAMPER PROOF FASTENERS, AND EXPOSED PADLOCK STAPLE.	

DESIGN DATA:

- EARTH COVER = 5 FEET MAX
- ALLOWABLE WHEEL LOAD = 8000 LB MAX
- CONCRETE MINIMUM COMPRESSIVE STRENGTH = 5,000 PSI @ 28 DAYS
- LIFTING HOOKS ARE 1" DIAMETER, ASTM A36 COLD ROLLED STEEL
- ENTIRE STRUCTURE & LID IS REINFORCED WITH #3 REBAR SPACED AT 12" OC GRID

IPANEX

- ALL CONCRETE IN THIS PRODUCT CONTAINS IPANEX, AN ADMIXTURE TO WATERPROOF THE CONCRETE AND PROVIDE CORROSION CONTROL.

CASTING WEIGHTS

WEIGHT OF LID: VARIES
 WEIGHT OF 6" RISER: 520 LBS
 WEIGHT OF 24" RISER: 2,080 LBS
 WEIGHT OF BASE: 3,880 LBS

DOSING TANK CAPACITY:

LIQUID STORAGE:
 6" RISER = 34 GALLONS
 24" RISER = 13 GALLONS
 BASE = 230 GALLONS

5.61 GALLONS PER INCH
 MAXIMUM DOSE = XXX GALLONS (XX)
 PUMP COOLING = VARIES
 UNUSED (LAG AND ALARM) = 130 GALLONS (8")
 TOTAL = XXX GALLONS (XX)

NOTES:

- SET PUMP ON FLOAT SWITCH ELEVATION ACCORDING TO ELEVATION TABLE (BELOW); WHICH YIELDS THE REQUIRED DOSE VOLUME OF XXX GALLONS.
- CONTRACTOR SHALL INSTALL CONTROL PANEL ACCORDING TO PUMP MANUFACTURER'S RECOMMENDATION.
- COORDINATE POWER & ALARM SERVICE PRIOR TO CONSTRUCTION ACTIVITIES
- ONLY NON-CORROSIVE MATERIALS SHALL BE UTILIZED WITHIN THE DOSING TANK AND FOR THE RISER AND LID (NO GALVANIZED, PAINTED, OR EXPOSED STEEL).
- AUDIO VISUAL ALARM CIRCUIT MUST LOCK ON WITH ANY PUMP FAILURE WITH MANUAL RESET.

RENSSELAER SEPTIC TANKS

1211 NORTH WESTON STREET
 P.O. BOX 70
 RENSSELAER, INDIANA 47978
 phone: (219) 866-5063
 (800) 240-5123
 fax: (219) 866-3894

PROJECT NAME
 CLIENT NAME
 ADDRESS

PROJECT NO: ---
 FILE: 36X36 SINGLE-TR-DUPLEX.DWG
 DRAWN BY: ASJM
 CHECKED BY: PEW
 TITLE:
**MANUFACTURER'S
 DETAIL DRAWING**
 36X36 DUPLEX CHAMBER
 TRAFFIC RATED

R-000

* ALL RENSSELAER SEPTIC TANKS ARE MONOLITHICALLY POURED *

This drawing is the property of Rensselaer Septic Tanks. It is submitted for reference purposes only. © 2008 Rensselaer Septic Tanks