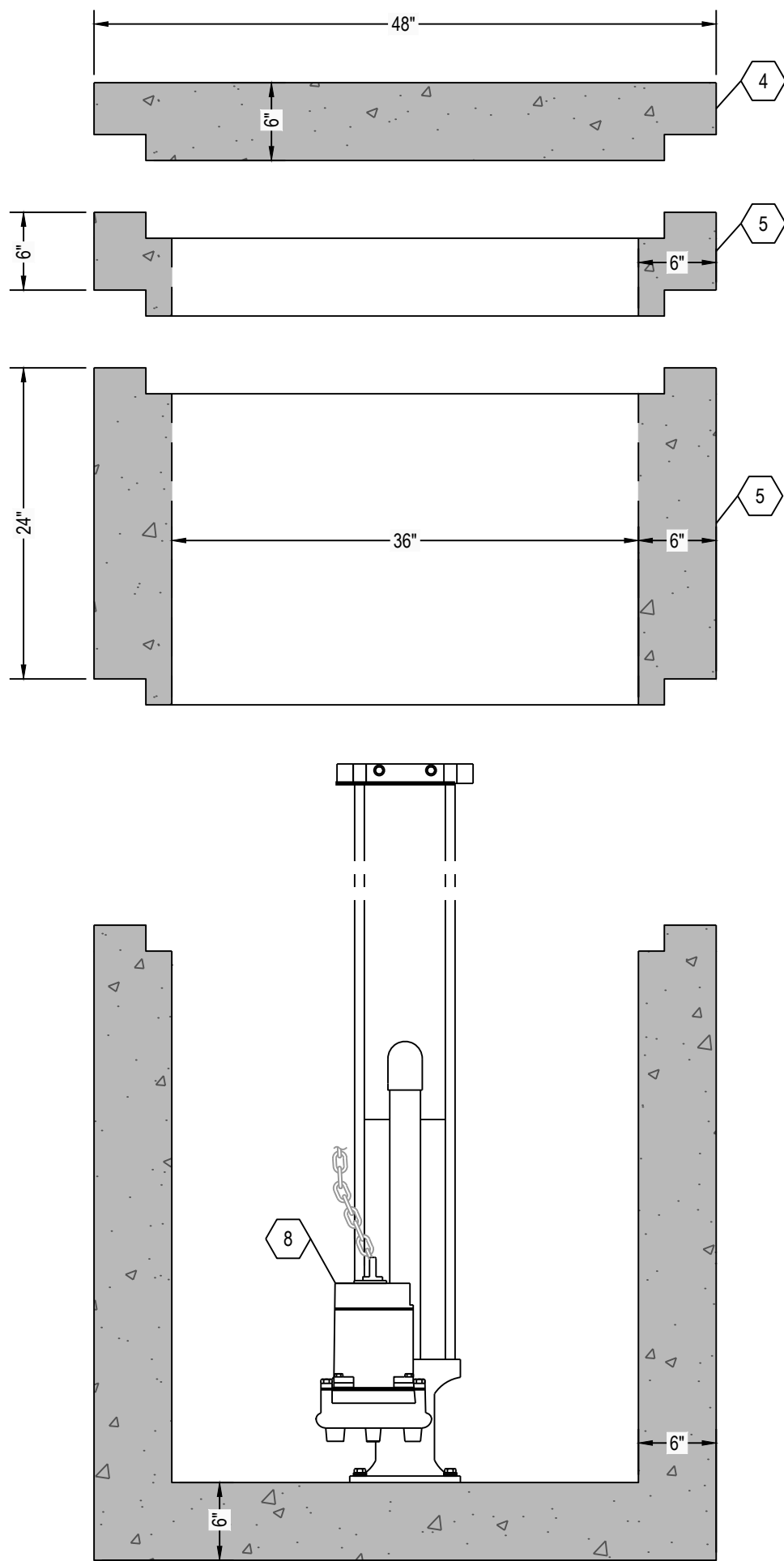
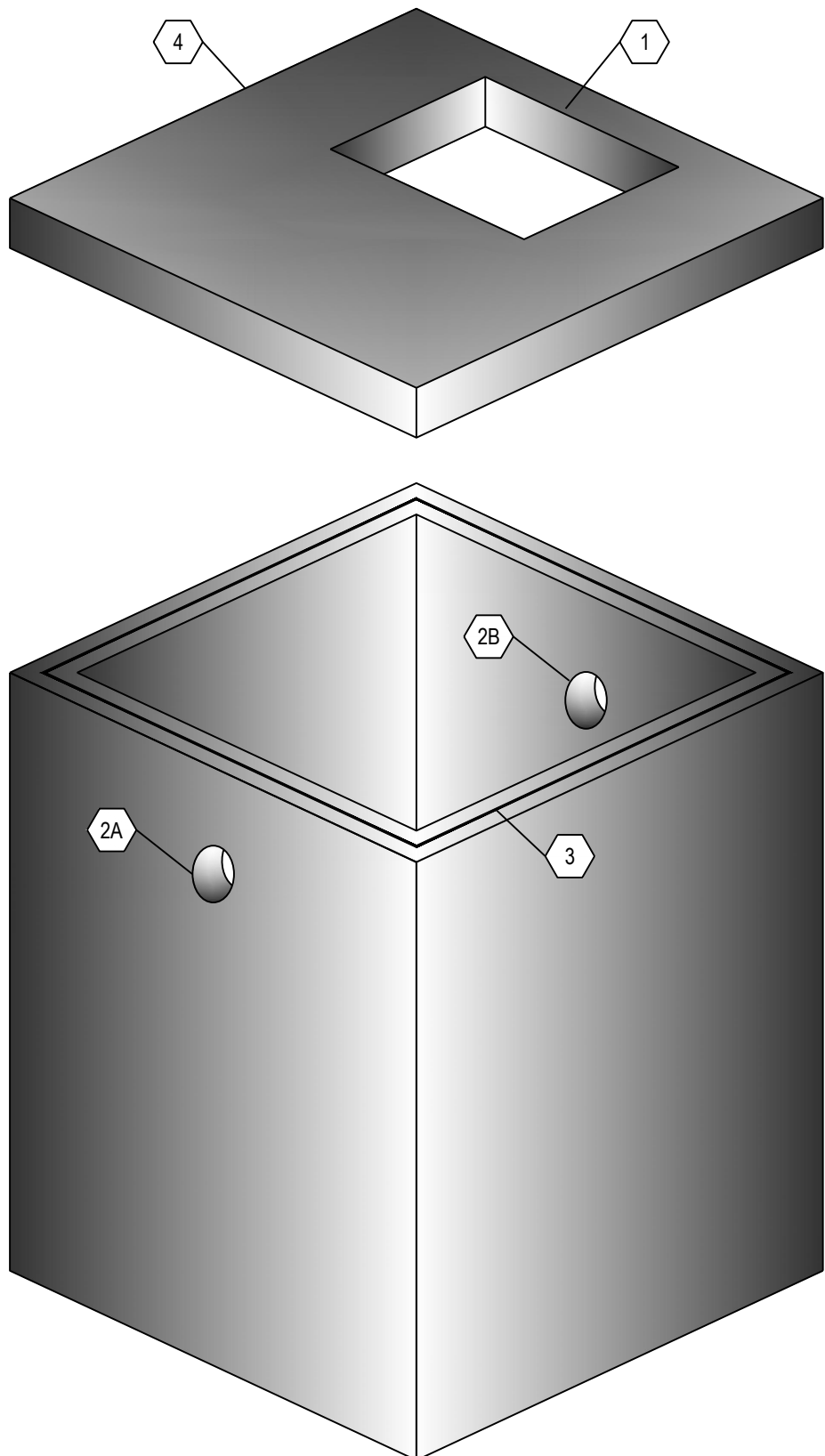


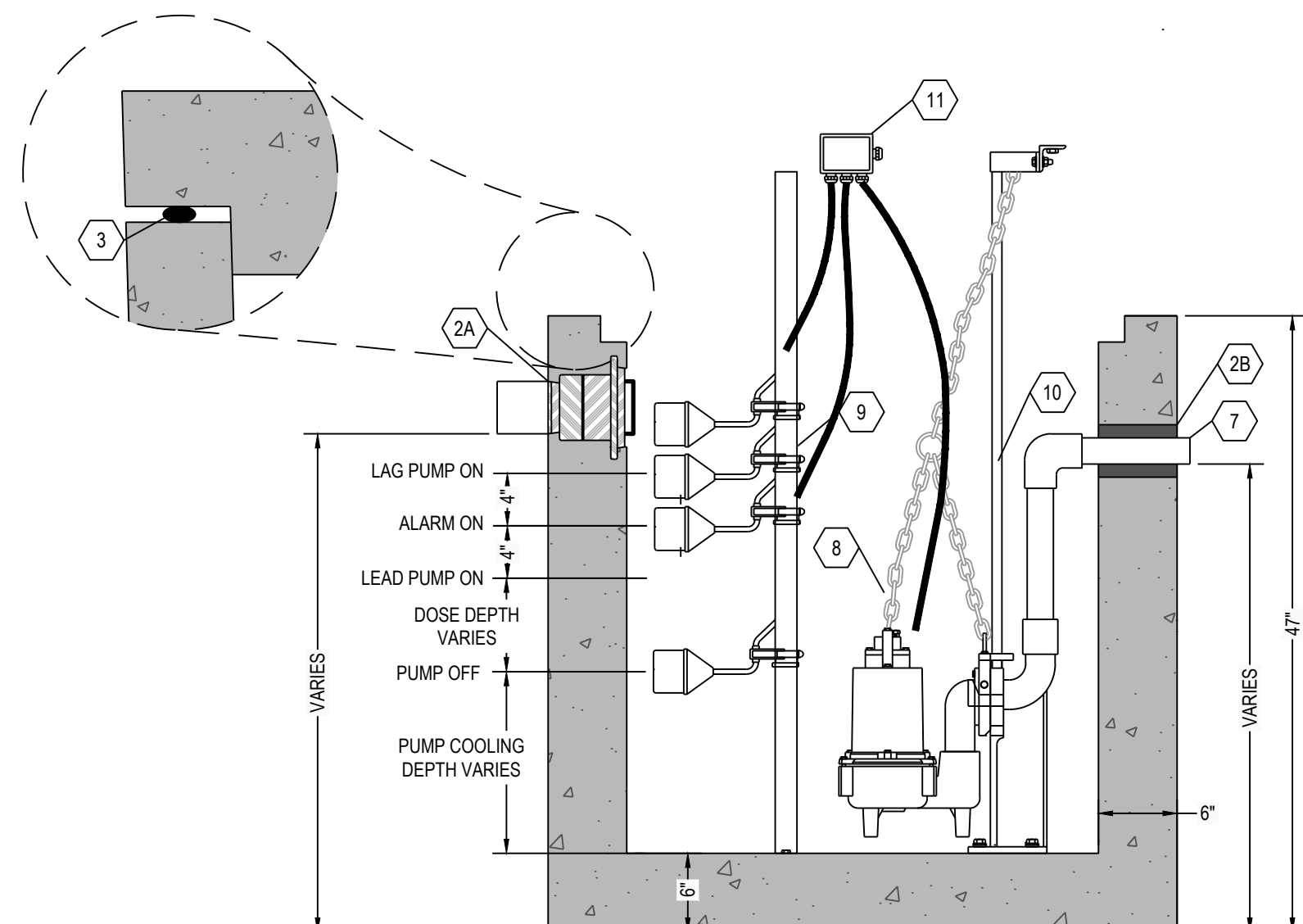
**C6 LIFT STATION SECTION VIEW**  
1" = 1"



**C4 LIFT STATION SECTION VIEW**  
1" = 1"



**A6 THREE DIMENSIONAL ISOMETRIC VIEW**  
NTS



**A4 LIFT STATION SECTION VIEW**  
1" = 1"

DOSING CHAMBER ELEVATIONS	
DESCRIPTION	ELEVATION (FEET)
BOTTOM OF CHAMBER	0.00
PUMP OFF	1.08
PUMP ON	2.83
ALARM	3.17
LAG PUMP	3.50

KEYNOTE INDEX	
1	24" X 24" ALUMINUM HATCH. SEE NOTES
2A	HIGH PRESSURE CLOSED END BOOT SEAL
2B	TS-4PRO RUBBER GASKET SEAL BY TUF-TITE
3	MASTIC ROPE
4	CONCRETE LID
5	CONCRETE RISER (AS NECESSARY)
6	6" DIAMETER INLET
7	X" DIAMETER OUTLET
8	DOSING PUMP
9	FLOAT POLE ASSEMBLY WITH STAINLESS STEEL HARDWARE. VARIABLE LENGTH
10	RAIL SYSTEM WITH STAINLESS STEEL RAILS & HARDWARE. VARIABLE LENGTH
11	WATERTIGHT ELECTRICAL JUNCTION BOX

NOTES	
HATCH TO BE 24" X 24" ALUMINUM HATCH, 300 PSF, SINGLE DOOR, INCLUDING ANGLE FRAME, STAINLESS STEEL NUTS & BOLTS, STAINLESS STEEL HINGES, STAINLESS STEEL AUTOMATIC HOLD-OPEN ARM WITH RED VINYL GRIP, FLUSH LIFT HANDLE, TAMPER PROOF FASTENERS, AND EXPOSED PADLOCK STAPLE.	

**DESIGN DATA:**

- EARTH COVER = 5 FEET MAX
- ALLOWABLE WHEEL LOAD = 8000 LB MAX
- CONCRETE MINIMUM COMPRESSIVE STRENGTH = 5,000 PSI @ 28 DAYS
- LIFTING HOOKS ARE 1" DIAMETER, ASTM A36 COLD ROLLED STEEL
- ENTIRE STRUCTURE & LID IS REINFORCED WITH #3 REBAR SPACED AT 12" OC GRID

**IPANEX**

- ALL CONCRETE IN THIS PRODUCT CONTAINS IPANEX, AN ADMIXTURE TO WATERPROOF THE CONCRETE AND PROVIDE CORROSION CONTROL.

**CASTING WEIGHTS**

WEIGHT OF LID: VARIES  
 WEIGHT OF 6" RISER: 520 LBS  
 WEIGHT OF 24" RISER: 2,080 LBS  
 WEIGHT OF BASE: 3,880 LBS

**DOSING TANK CAPACITY:**

**LIQUID STORAGE:**  
 6" RISER = 34 GALLONS  
 24" RISER = 13 GALLONS  
 BASE = 230 GALLONS

5.61 GALLONS PER INCH  
 MAXIMUM DOSE = XXX GALLONS (XX)  
 PUMP COOLING = VARIES  
 UNUSED (LAG AND ALARM) = 130 GALLONS (8")  
 TOTAL = XXX GALLONS (XX)

**NOTES:**

- SET PUMP ON FLOAT SWITCH ELEVATION ACCORDING TO ELEVATION TABLE (BELOW); WHICH YIELDS THE REQUIRED DOSE VOLUME OF XXX GALLONS.
- CONTRACTOR SHALL INSTALL CONTROL PANEL ACCORDING TO PUMP MANUFACTURER'S RECOMMENDATION.
- COORDINATE POWER & ALARM SERVICE PRIOR TO CONSTRUCTION ACTIVITIES
- ONLY NON-CORROSIVE MATERIALS SHALL BE UTILIZED WITHIN THE DOSING TANK AND FOR THE RISER AND LID (NO GALVANIZED, PAINTED, OR EXPOSED STEEL).
- AUDIO VISUAL ALARM CIRCUIT MUST LOCK ON WITH ANY PUMP FAILURE WITH MANUAL RESET.

# RENSELAER SEPTIC TANKS

1211 NORTH WESTON STREET  
 P.O. BOX 70  
 RENSELAER, INDIANA 47978  
 phone: (219) 866-5063  
 (800) 240-5123  
 fax: (219) 866-3894

PROJECT NAME  
 CLIENT NAME  
 ADDRESS

PROJECT NO: ---  
 FILE: 36X36 SINGLE-TR-SIMPLEX.DWG  
 DRAWN BY: ASJM  
 CHECKED BY: PEW  
 TITLE:  
**MANUFACTURER'S  
 DETAIL DRAWING**  
 36X36 DUPLEX CHAMBER  
 TRAFFIC RATED

**R-000**

\* ALL RENSELAER SEPTIC TANKS ARE MONOLITHICALLY POURED \*

This drawing is the property of Rensselaer Septic Tanks. It is submitted for reference purposes only. © 2008 Rensselaer Septic Tanks