

6

5

4

3

2

1

DESIGN DATA:

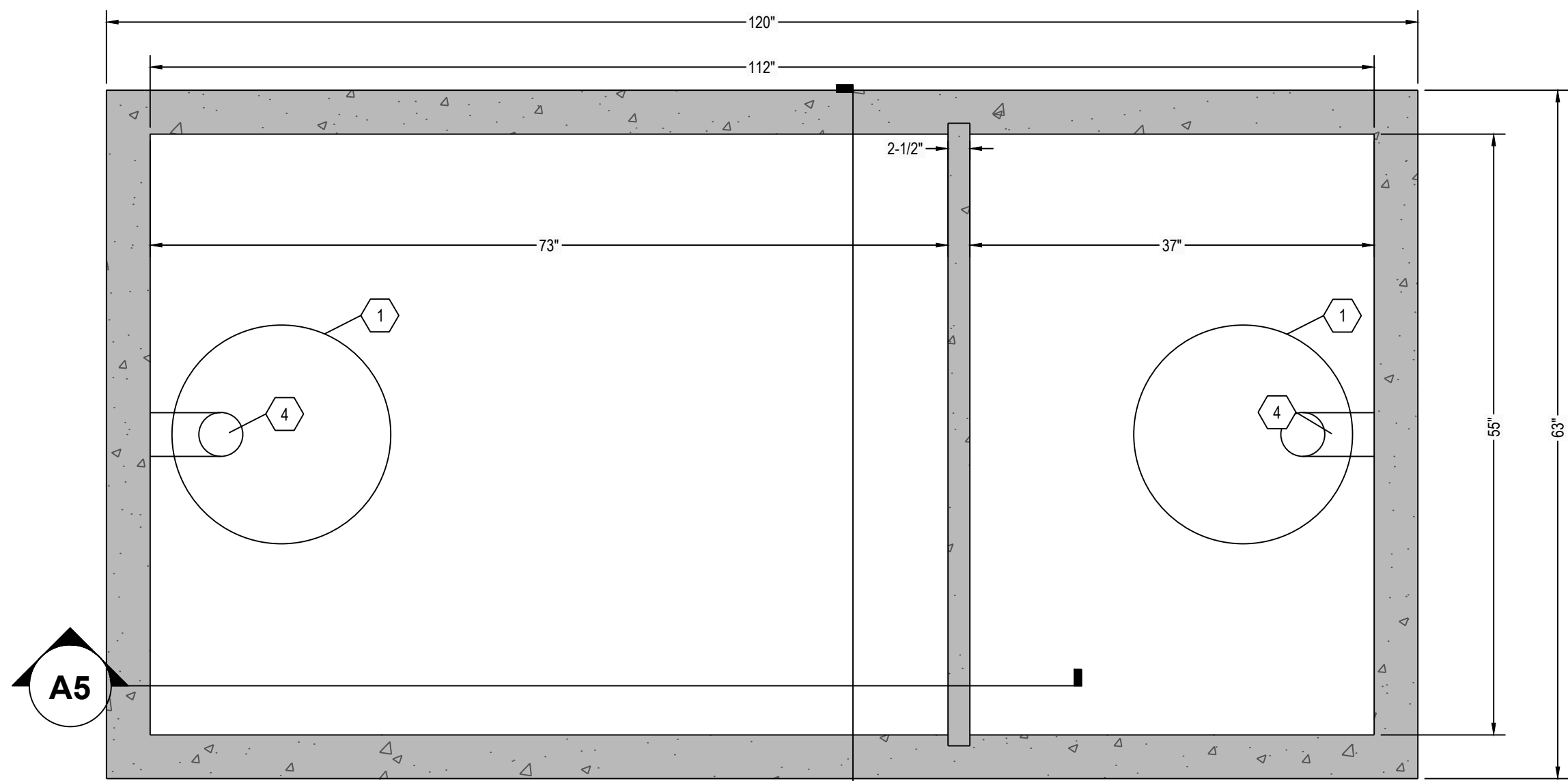
- EARTH COVER = 5 FEET MAX
- ALLOWABLE WHEEL LOAD = 16,000 LB MAX
- CONCRETE MINIMUM COMPRESSIVE STRENGTH = 5,000 PSI @ 28 DAYS
- LIFTING HOOKS ARE 1/2" DIAMETER, ASTM A36 COLD ROLLED STEEL
- SEPTIC TANK LID IS REINFORCED WITH #3 REBAR SPACED AT 12" OC GRID
- SEPTIC TANK BOTTOM AND SIDES ARE REINFORCED WITH 6 X 6 W8.0 X W8.0 WELDED WIRE FABRIC
- ALL CONCRETE SURFACES ABOVE THE LIQUID LEVEL ARE COATED WITH AIRLESS ASPHALT

(2) COMPARTMENT TANK CAPACITY:

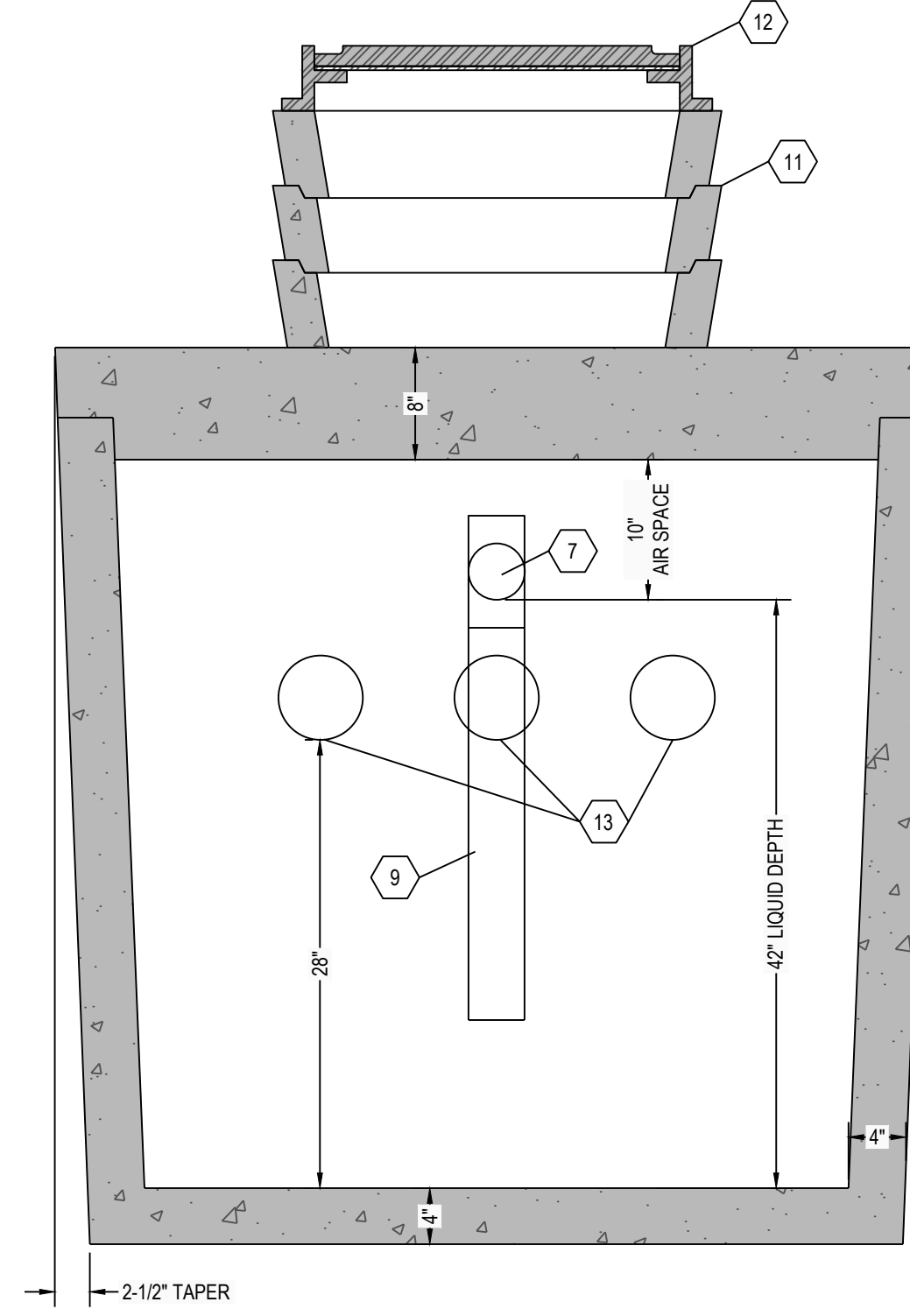
FIRST COMPARTMENT CAPACITY = 672 GALLONS
16 GALLONS PER INCH

SECOND COMPARTMENT CAPACITY = 330 GALLONS
7.9 GALLONS PER INCH

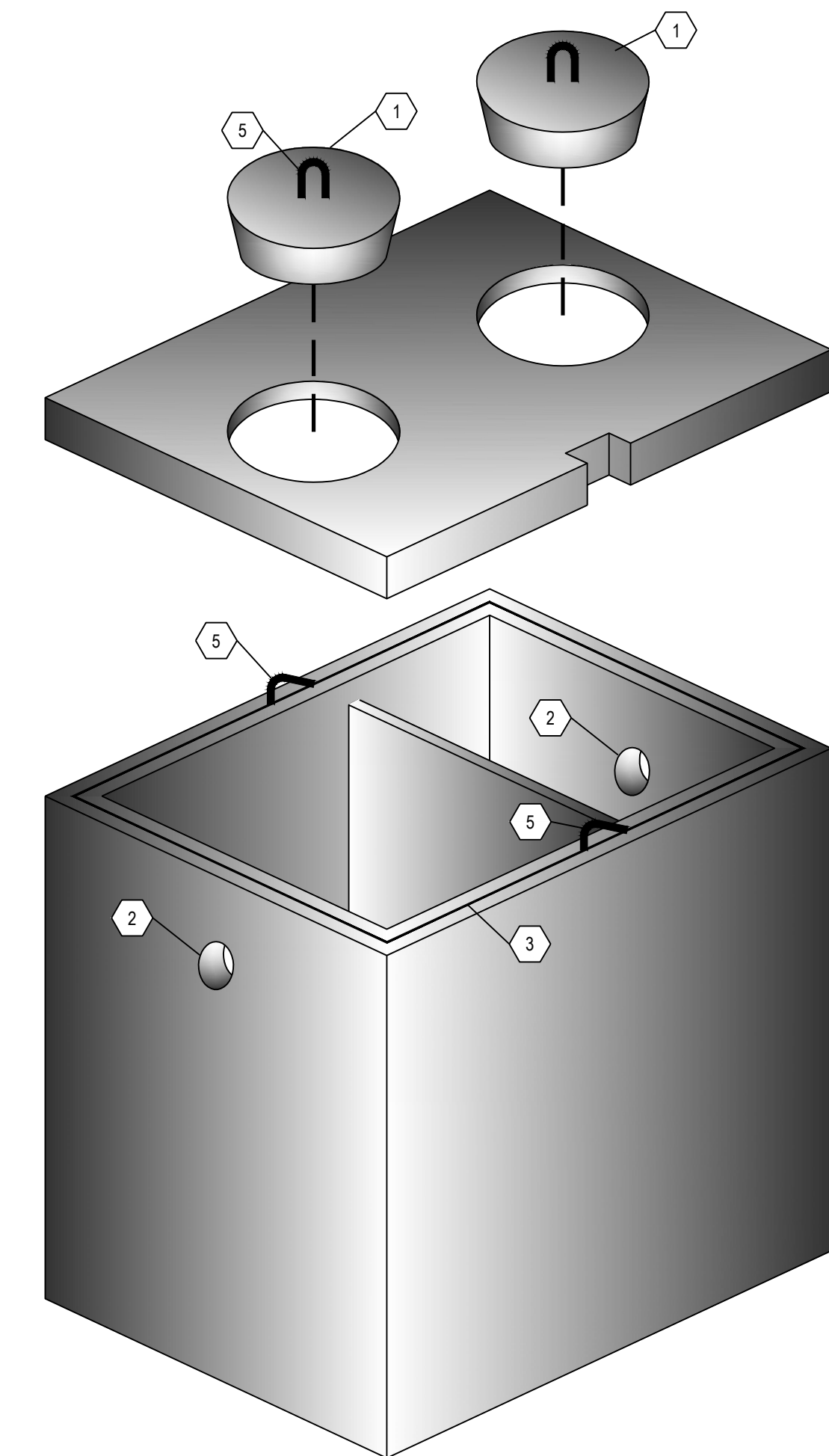
STORAGE CAPACITY = 1002 GALLONS



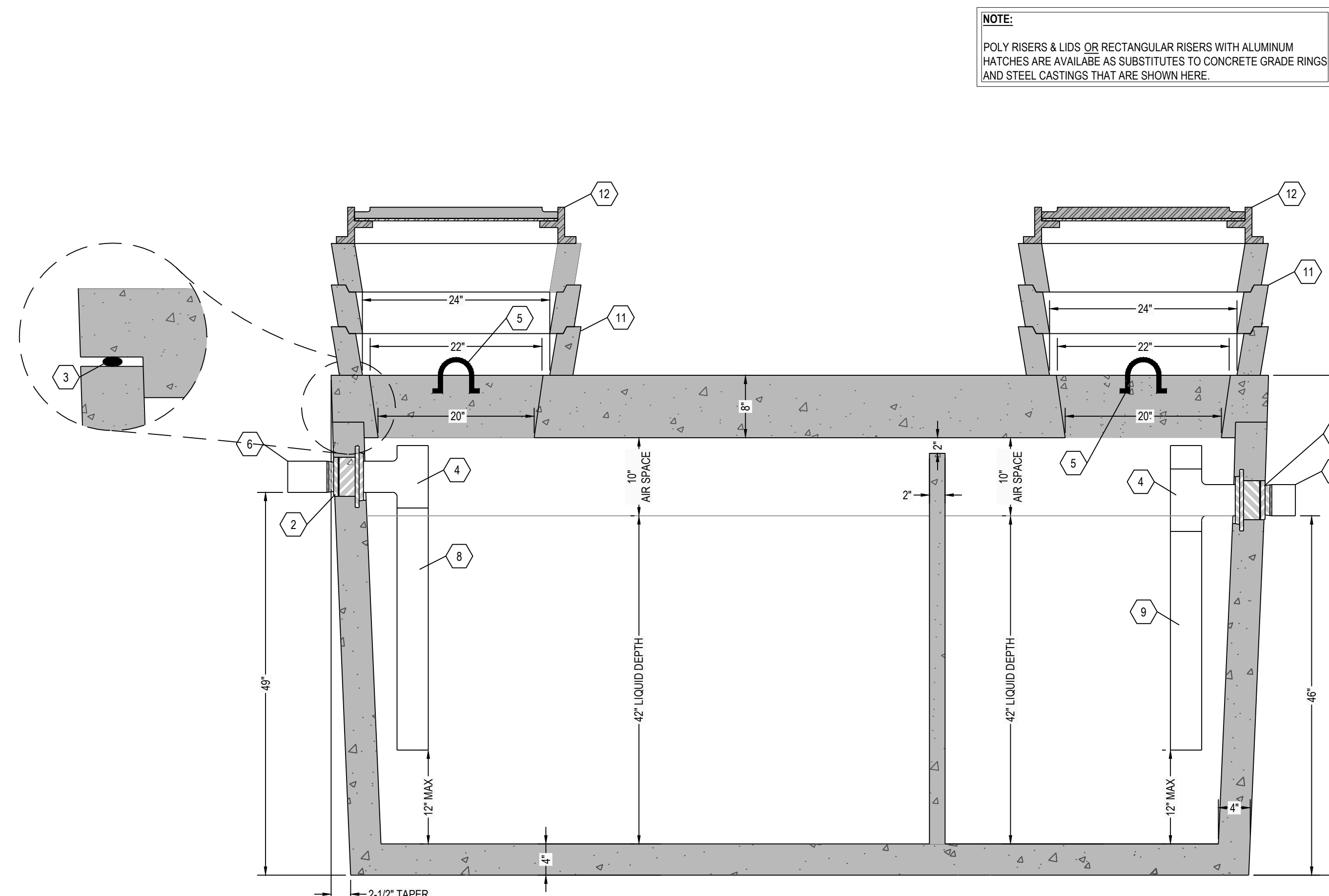
C6 GREASE TRAP TOP VIEW



C4 GREASE TRAP TOP VIEW



A6 THREE DIMENSIONAL ISOMETRIC VIEW



A5 GREASE TRAP SECTION VIEW

NOTE:
POLY RISERS & LIDS OR RECTANGULAR RISERS WITH ALUMINUM HATCHES ARE AVAILABLE AS SUBSTITUTES TO CONCRETE GRADE RINGS AND STEEL CASTINGS THAT ARE SHOWN HERE.

KEYNOTE INDEX

1	20" DIAMETER MANHOLE OPENING
2	HIGH PRESSURE CLOSED END BOOT SEAL BY POLYLOK
3	MASTIC ROPE
4	SANITARY TEE AT INLET & OUTLET
5	1/2" DIAMETER LIFTING HOOKS
6	6" DIAMETER INLET
7	6" DIAMETER OUTLET
8	30" (MIN) EXTENSION AT INLET
9	30" (MIN) EXTENSION AT OUTLET
11	CONCRETE GRADE RING (AS NECESSARY)
12	STEEL CAST FRAME & COVER (NOT INCLUDED)
13	THREE (3) 6" DIAMETER HOLES THROUGH INTERIOR WALL

RENSELAER SEPTIC TANKS

1211 NORTH WESTON STREET
P.O. BOX 70
RENSELAER, INDIANA 47978
phone: (219) 866-5063
(800) 240-5123
fax: (219) 866-3894

PROJECT NAME
CLIENT NAME
ADDRESS

PROJECT NO: _____
F1000 GAL - DUAL - TR LOW PROFILE DWG
DRAWN BY: ASJM
CHECKED BY: PEW

TITLE:
**MANUFACTURER'S
DETAIL DRAWING**
1000 GALLON (2) COMPARTMENT
TRAFFIC RATED (LOW PRO)

R-000

* ALL RENSELAER SEPTIC TANKS ARE MONOLITHICALLY POURED *

6

5

4

3

2

1

This drawing is the property of Rensselaer Septic Tanks. It is submitted for reference purposes only. © 2008 Rensselaer Septic Tanks